

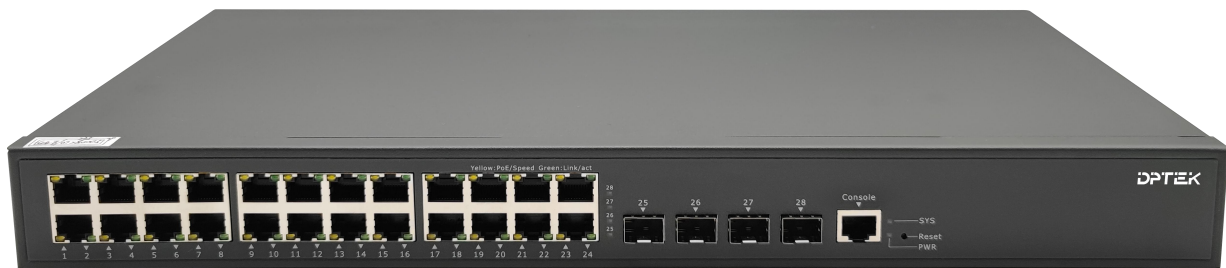
4*1G/2.5G/10G SFP+ + 24*10/100/1000Base-T Layer 2+ Managed Ethernet Switch

DK2210M-24T4X

Overview

The DPTEK DK2210M-24T4X is the Layer 2+ managed Gigabit switch. The series deliver full Gigabit access and unparalleled scalability to 10G performance. It provides high-density performance, Layer 3 static routing with 128 Gbps switching capacity. The DK2210M-24T4X provides comprehensive end to end QoS as well as flexible and rich management, security settings, which can meet the high speed, secure and smart requirement for small and medium-size enterprise networks based on cost effective price. The powerful network security features also make the DK2210M-24T4X perform effective data traffic control for ISP and enterprise VoIP, video streaming, and multicast applications.

Picture



Features

- 4*1G/2.5G/10G SFP+ ports uplink, 24*10/100/1000M RJ45 ports downlink, 1*RJ45 console port for switch basic management and setup
- Layer 3 routing features: Supports static routing
- Port aggregation: Supports GE ports, 2.5GE and 10GE port aggregation, static and dynamic aggregation
- VLAN: Supports access, trunk, hybrid mode and VLAN classification, including the Mac based VLAN, IP based VLAN and protocol based VLAN
- QinQ: Supports port-based, VLAN-based and flow-based QinQ
- Port Mirroring: Many to one port mirroring
- Layer 2 ring network protocol: Supports STP, RSTP, MSTP, G.8032 ERPS protocol, single ring, sub ring
- Multicast: Supports IGMP V1, V2,V3 and IGMP snooping

- QoS: QoS class, remarking, Supports SP, WRR queue scheduling, Ingress/Engress port-based rate-limit and policy-based QoS
- Security: Support Dot1x, port authentication, mac authentication, RADIUS service; Support port-security, ip source guard, IP/Port/MAC binding, arp-check and ARP packet filtering for illegal users and port isolation
- Management: Supports LLDP, user management and login authentication; SNMPV1/V2C/V3; web management, HTTP1.1, HTTPS; Syslog ; RMON (Remote Monitoring) alarm, event and history record; NTP, temperature monitoring; Ping、Tracert and optical transceiver DDM function; Supports TFTP Client, Telnet Server, SSH Server and IPv6 Management
- Firmware update, configure backup/restore through Web GUI, FTP and TFTP

Technical Specification

Model	DK2210M-24T4X
Fixed ports	4*1G/2.5G/10G SFP+ ports , 24*10/100/1000M RJ45 ports
Management port	1*Console
Switching capacity	128Gbps
Packet forwarding rate	95Mpps
MAC address table	16K
Buffer	12M bit
Port aggregation	Support gigabit port, 2.5GE and 10GE port aggregation Support static and dynamic aggregation
Port features	Support IEEE802.3x flow control, Port traffic statistics, port isolation Support network storm suppression based on port bandwidth percentage
VLAN	Support access, trunk and hybrid mode
VLAN Classification	Mac Based VLAN IP Based VLAN Protocal Based VLAN

QinQ	Basic QinQ (Port-based QinQ) Flexible Q in Q(VLAN-based QinQ) QinQ(Flow-based QinQ)
Port mirroring	Many to one (Port Mirroring)
Layer 2 ring network protocol	Support STP、RSTP、MSTP Support G.8032 ERPS protocol, single ring, sub ring and other ring
DHCP	DHCP Client DHCP Snooping
ARP	ARP table aging
IPv4/IPv6	Static routing
Multicast	IGMP V1,V2,V3 IGMP snooping
ACL	IP Standard ACL MAC extend ACL IP extend ACL
QoS	QoS Class, Remarking Support SP, WRR queue scheduling Ingress Port-based Rate-limit Egress Port-based Rate-limit Policy-based QoS
Security	Support Dot1x, port authentication, mac authentication, RADIUS service Support port-security Support ip source guard, IP/Port/MAC binding Support arp-check and ARP packet filtering for illegal users Support port isolation
Management and maintenance	Support LLDP Support user management and login authentication Support SNMPV1/V2C/V3 Support web management, HTTP1.1, HTTPS Support Syslog Support RMON (Remote Monitoring) alarm, event and history record Support NTP Support temperature monitoring Support Ping、Tracert Support optical transceiver DDM function

	Support TFTP Client Support Telnet Server Support SSH Server Support IPv6 Management Support FTP, TFTP, WEB upgrading
Dimension(mm)	440*245*44mm
Power supply	VAC input Rated voltage range: 100-240V Frequency: 50/60Hz
Fan	Support fan speed control
Consumption	≤40W
Power surge protection	6KV, IEC 61000-4-5 Level X (8/20us)
Ethernet ports surge protection	4KV, IEC 61000-4-5 Level 4 (10/700us)
Working temperature	0°C-50°C
Humidity	Working humidity: 10%-90%RH Storage humidity: 5%-95%RH

Order information

Model	Description
DK2210M-24T4X	Layer 2+ managed Ethernet switch with 4*1G/2.5G/10G SFP+ ports + 24*10/100/1000M RJ45 ports, AC 100-240V 50/60Hz